

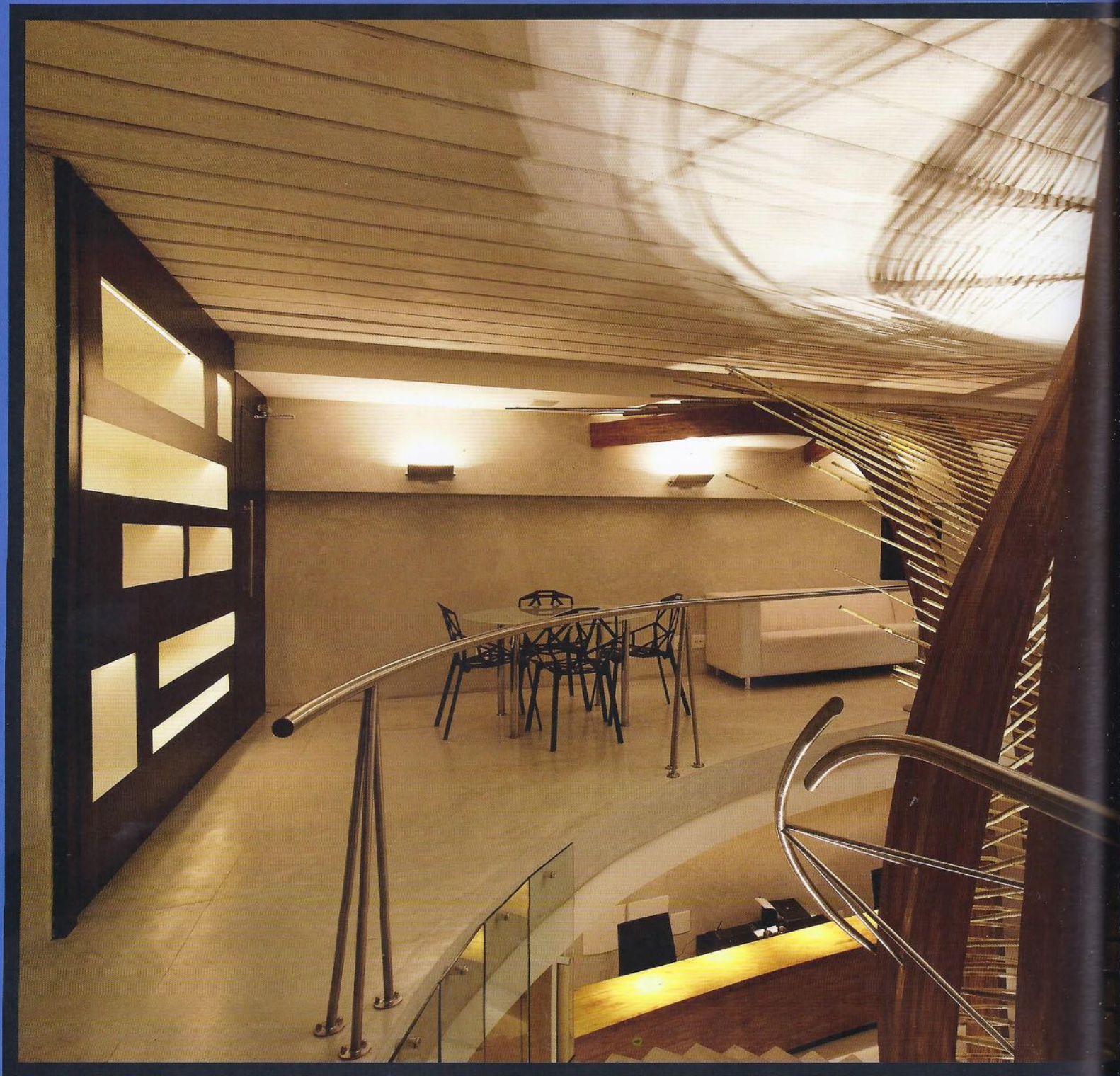
Large Office Space

大型办公空间

深圳市创扬文化传播有限公司 策划

徐宾宾 主编





Glem Offices

Glem 办公室



设计公司: Mareines + Patalano Arquitetura

设计团队: Ivo Mareines、Rafael Patalano、Flávia Lima、Rafael Pretti

项目地点: 巴西里约热内卢

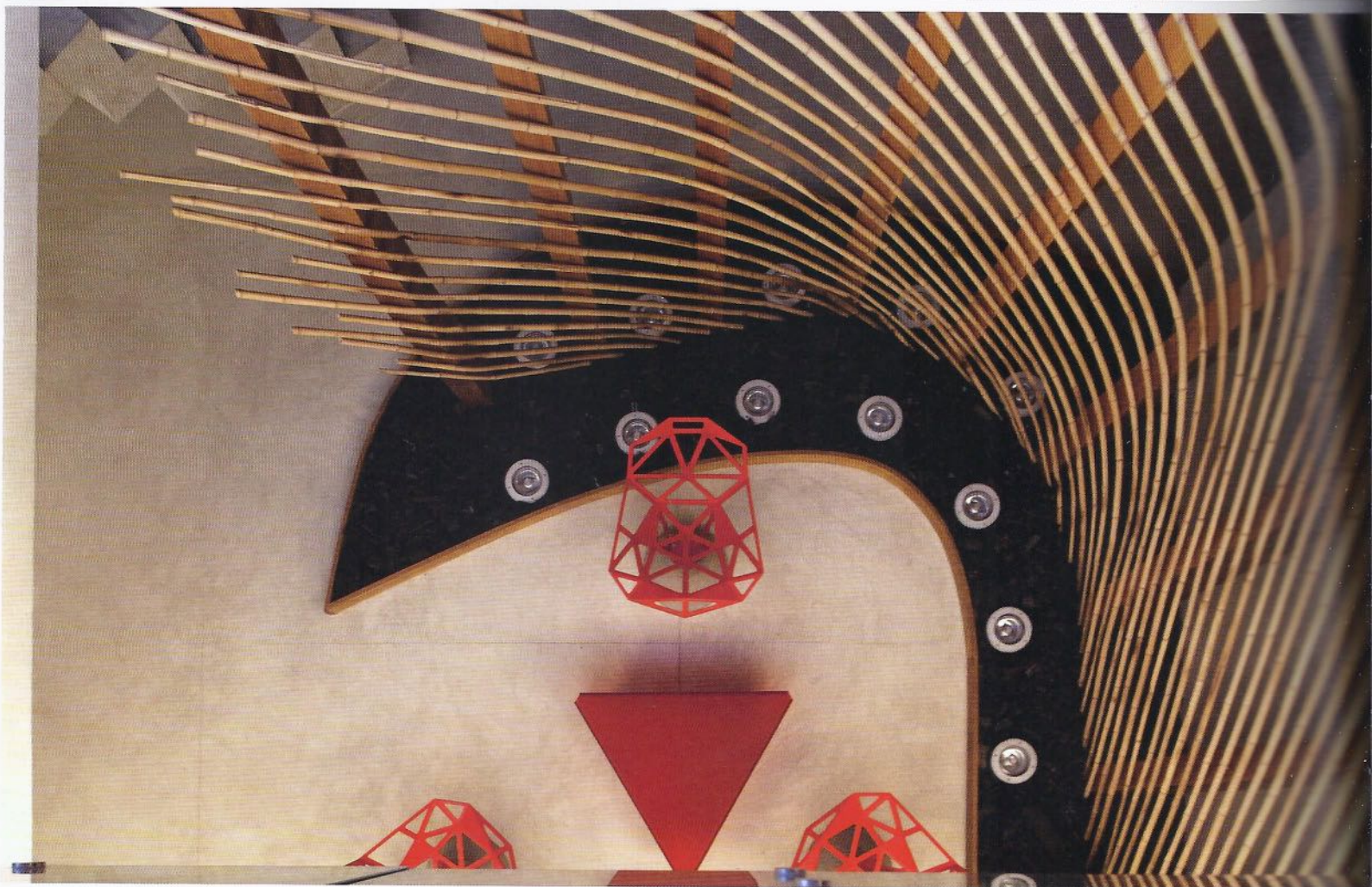
建筑面积: 35 000平方米

The design of Glem offices in Rio de Janeiro, Brazil, is defined by its odd location, under a triangular end of a concrete stand for rowing competitions. Besides the fact that the first of the three floors is semi-buried and the roof is public seating made of concrete, thus not allowing openings to the exterior, windows were extremely restricted on the only two small façades of the project.

One is almost entirely occupied by a pedestrian ramp to access the stands, which are public and so, seen by the client as a threat to a possible trespassing. For that reason, this façade has some long and narrow openings closed with clear transparent glass, to invite inside only light and external views.

The second façade overlooks a group of confused existing buildings, a fact that led us to design a semi-circle glazing with translucent bullet-proof glass.

After dealing with all that limitations, we decided to bring together all the separate parts of the project via a vertical circulation space defined by curved concrete stairs, eucalyptus laminated beams and a bamboo mesh. An empty 'basket' that welcome visitors and animate the office with a delicately enclosed void. On the first level, the basket-defined space offers a small waiting area used as well for informal meetings, and distribute access to three sinuous meeting rooms, two bathrooms, a working area and a technical room.



The first staircase takes to a catwalk that mirrors, in laminated translucent glass, the semi-circle geometry of one of the façades glazing. This catwalk takes to the second floor that contains wood sliding doors that can partially connect or totally separate the spaces of the office's directors' rooms.

The second staircase takes to the relaxing level of the office, with a small kitchen, a table for eating and a sofa for resting. There are also two changing rooms here. Details such as the on-site handcrafted bamboo mesh, the translucent catwalk glass, stainless steel handrails that seem to float over the stairs for not being attached to it, and the generous light filtered mainly through the semi-circle glazing, gives lightness and delicacy to the design.

Glem办事处坐落于巴西里约热内卢的一个赛艇比赛场地的末端三角区域，由于这样特殊的地理位置，其设计也受到一定的限制。办事处所在的三层楼中的第一层半埋于地下，其屋顶是由混凝土制成的公共座椅，因此不允许从外部开口。除此之外，仅仅有两面外墙上分布着数量极其有限的窗户。

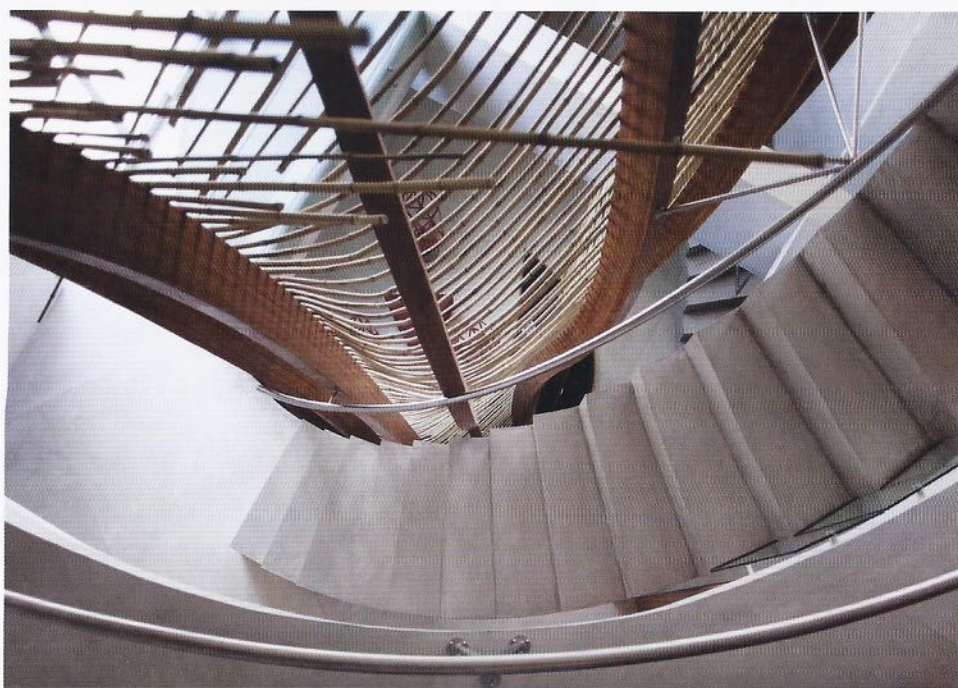
其中一面墙几乎完全被一个同乡看台的坡道占领，在客户看来，这个对外公开的看台无疑是个潜在的威胁。正因如此，这面墙仅仅开了几道狭长的窄口，用透明玻璃封住，仅供光线和外景进入室内。

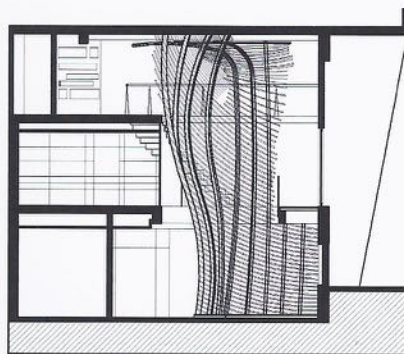
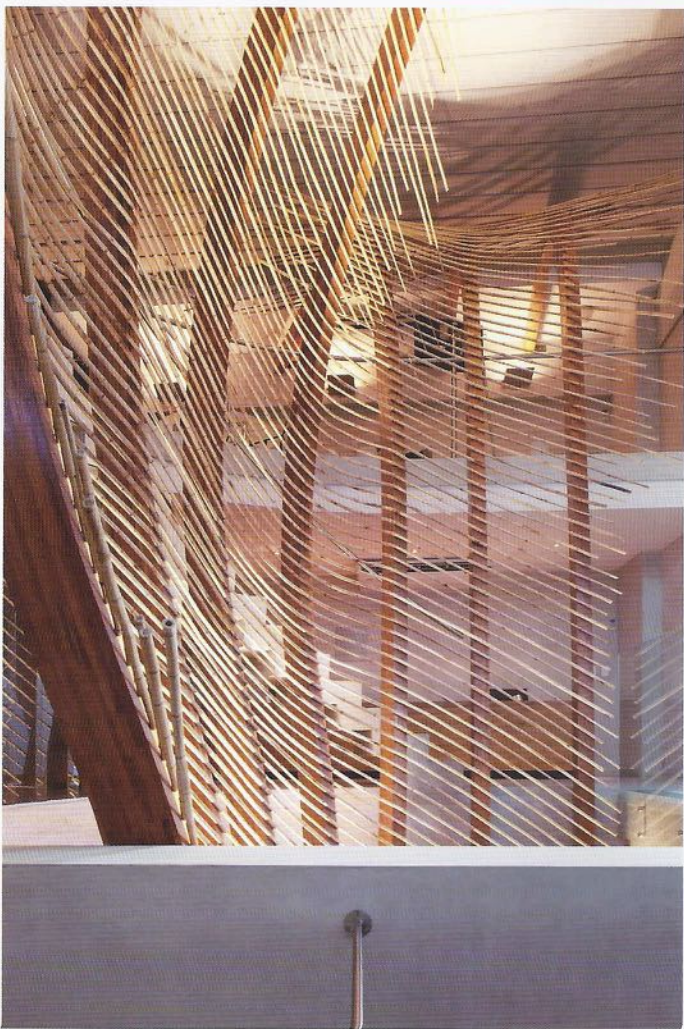
从第二面外墙俯瞰，看到的尽是一些令人困惑的建筑群，因此我们将之设计成一个半圆的玻璃窗，窗上是透明的防弹玻璃。

这些限制妥善处理之后，我们决定将所有的单独部分拼接在一起，通过混凝土楼梯形成的垂直循环空间，并充分利用了悬梁和一个竹制网格。迎接宾客的空间是一处用竹篮精心编织成的封闭区域，竹篮的设计将沉闷的办公室氛围变得栩栩如生。在第一级，竹篮空间成为了一个小小的等候区或是非正式会面区，于此同时，指示了通向会议室，两间洗手间，一个工区和一个技术室的蜿蜒通道。

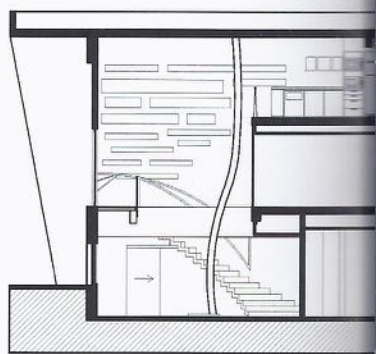
第一个楼梯是一个狭长的过道，有一些夹层的透明玻璃形成的镜子，以及半圆的呈几何图形的外墙玻璃面。狭长的过道一直通往二楼的木质推拉门处，推拉门对几个不同的办公室既起到连接，又起了分隔作用。

第二个楼梯通往办公室的休闲空间，其中有一个小小的吧台，一张吃饭的桌子和一张舒适的休闲沙发，以及两个更衣室。屋里的手工竹质网格，透明的玻璃小道，不锈钢扶手，看上去似乎是悬浮在整个房间里，阳光透过半圆形玻璃照射进来。每一处细节都给人以精致与轻盈感。

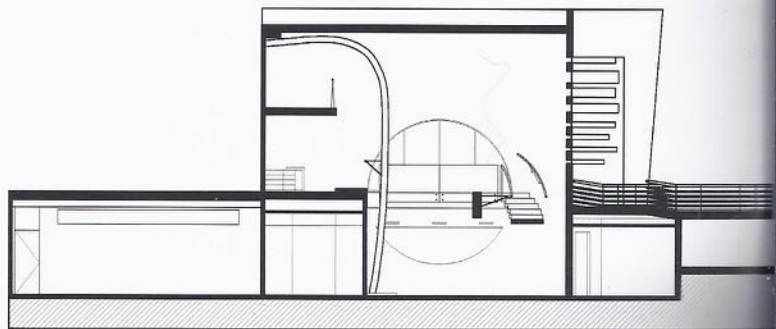




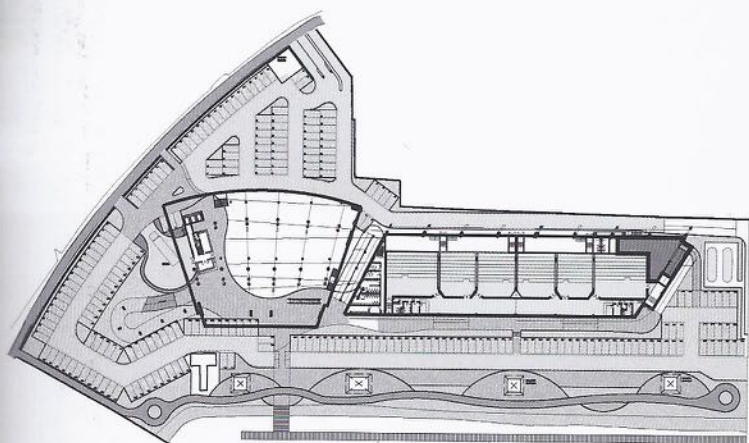
项目立面布置图一



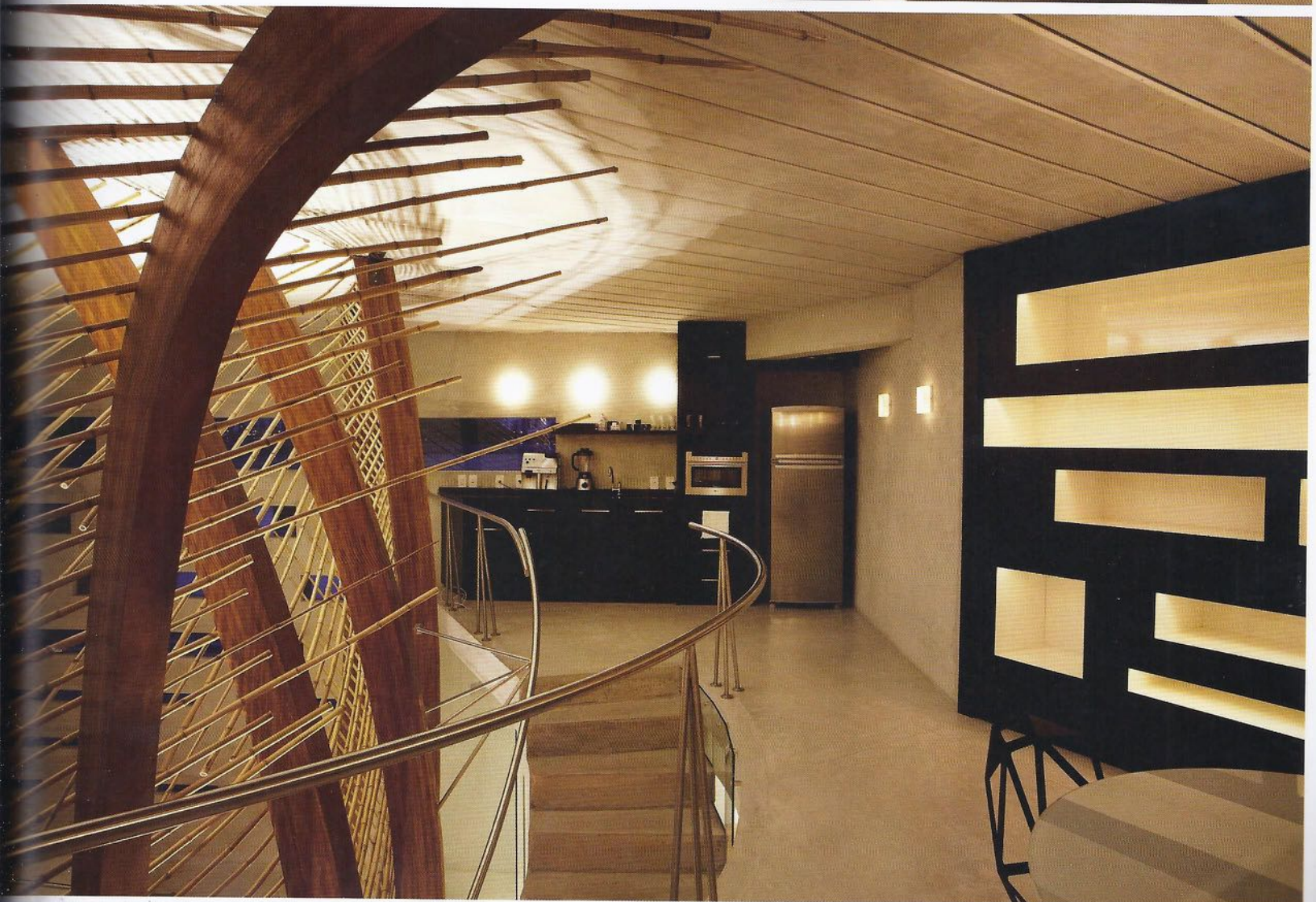
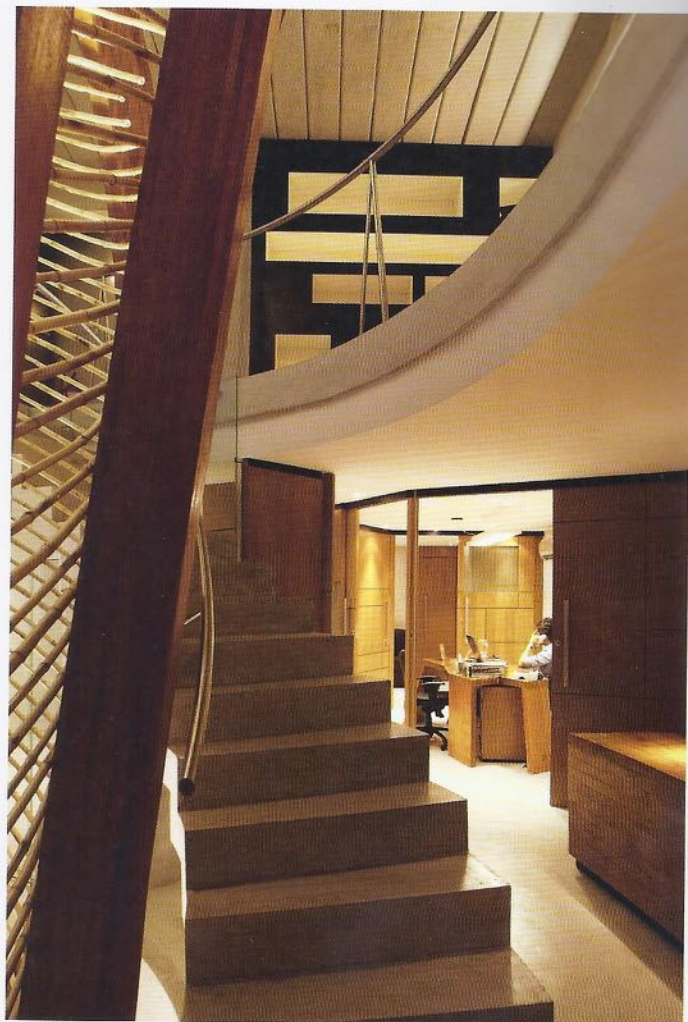
项目立面布置图二



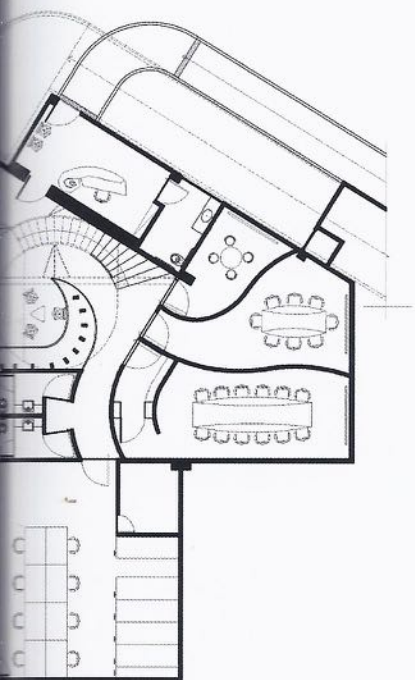
项目立面布置图三



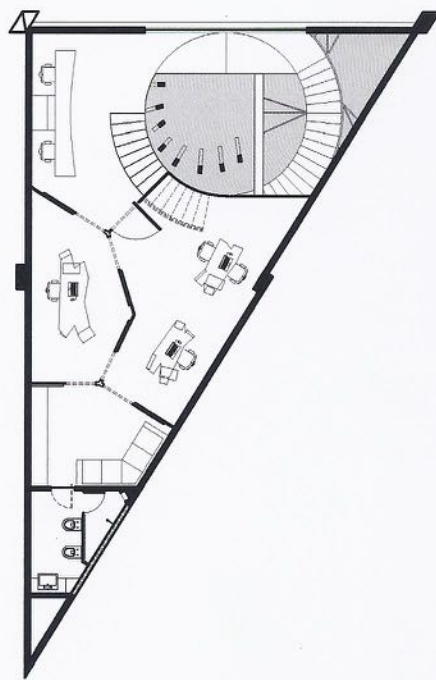
项目总平面布置图



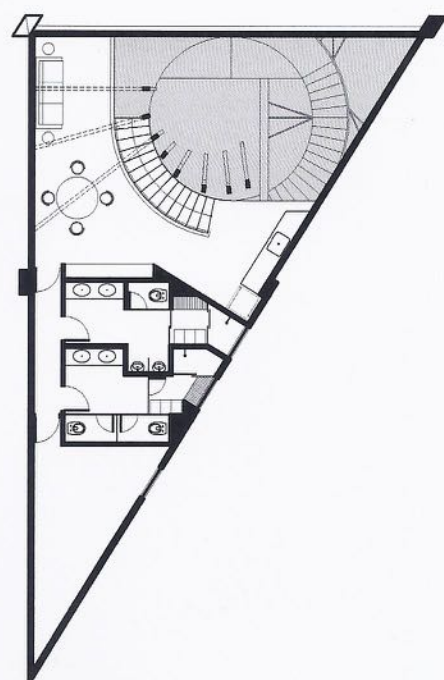




一层平面布置图



二层平面布置图



三层平面布置图



