

WALL ELEMENTS ART WALL

建筑立面设计语言
艺术墙

凤凰空间·北京 编

江苏人民出版社



莫匹小学

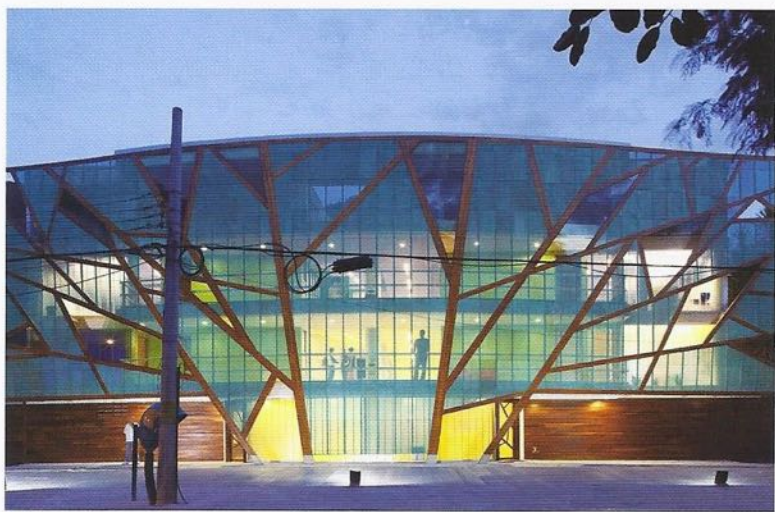
MOPI Elementary School

莫匹小学, Mareines + Patalano, 巴西, 里约热内卢, 2009年

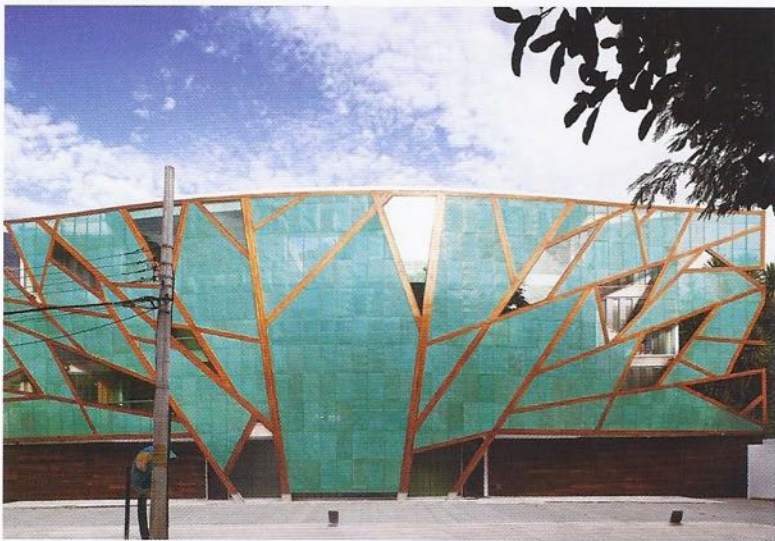
莫匹小学位于里约热内卢城区一片绿地之中。建筑的正立面是一棵树的抽象图案, 唤起了人们对森林的联想。建筑是一个混凝土构架, 上面架有胶合层叠木梁, 木梁间镶有带小孔的预氧化铜面板。微型穿孔铜材为走廊提供了良好的透气性, 还能够遮挡雨水的进入。它通过透明与不透明的双重性为学校增添了蓬勃的生机。在白天, 它从室外看是不透明的, 而从室内向外看却是半透明的。绿色调的立面在夜晚变为半透明, 流光溢彩, 栩栩如生。

MOPI Elementary School, Mareines + Patalano, Rio de Janeiro, Brazil, 2009

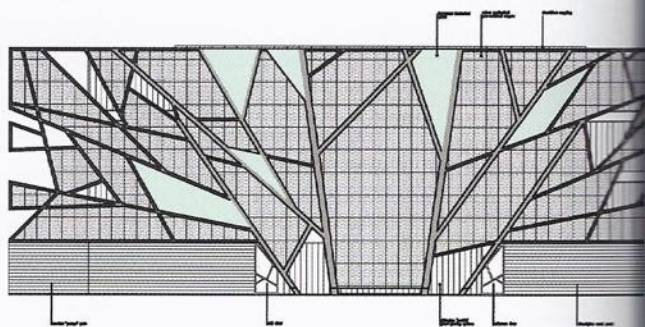
MOPI Elementary School is located in an urban but very green area of Rio de Janeiro. The main façade evokes the forest; it is an abstraction of a tree. It is composed of micro-perforated pre-oxidized copper panels attached to laminated wood beams, which are then attached to the concrete structure of the building. The micro-perforation of the copper allows the passage of air while blocking rain water. It also gives the school a very lively aspect since it plays with transparency and opacity. During the day it looks opaque from the outside and semi-transparent from inside. The green color dominates the façade. At night, it becomes semi-transparent, letting movements and colors shine through, making it come alive.



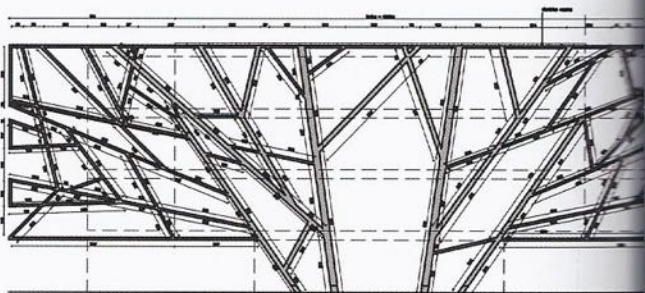
© Leonardo Finotti



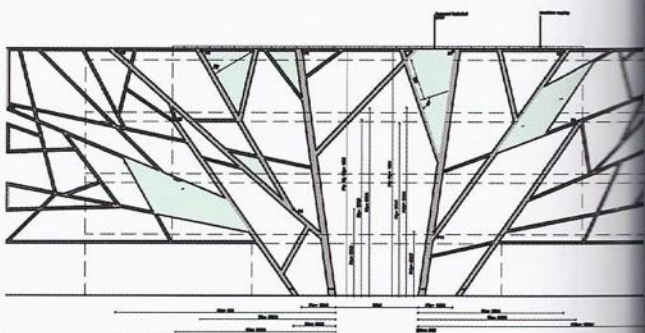
© Leonardo Finotti



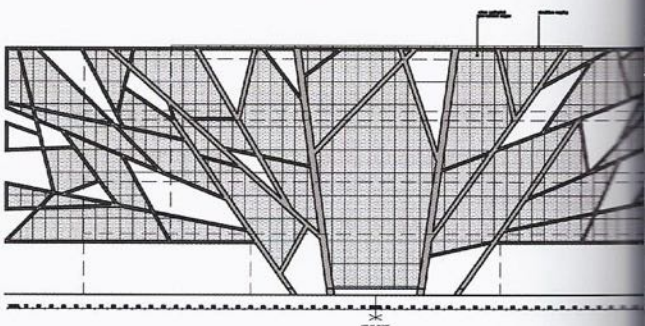
STREET FAÇADE DEVELOPING FIGURE - FINAL COMPOSITION



STREET FAÇADE DEVELOPING FIGURE - LAMINATED WOOD BEAMS GEOMETRY

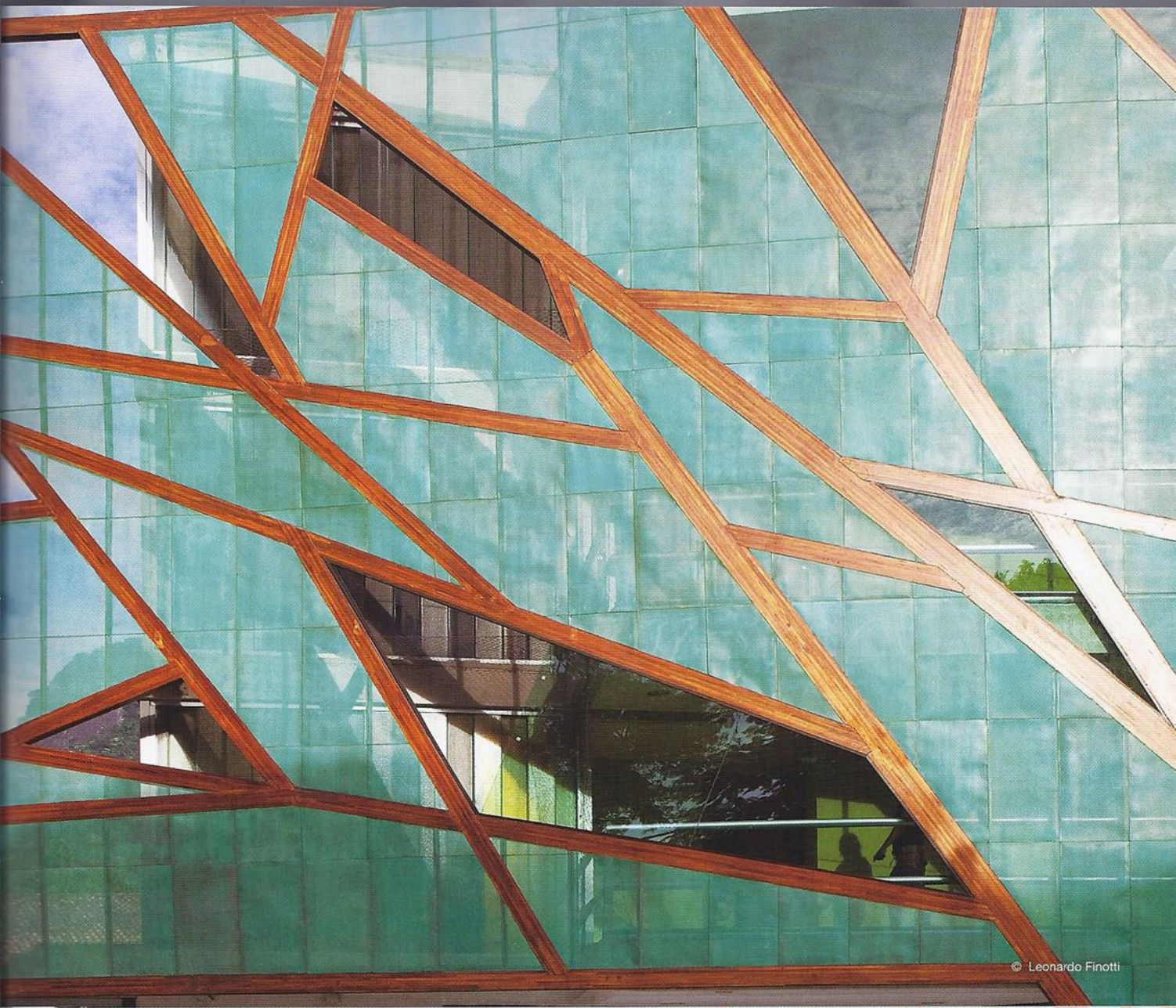


STREET FAÇADE DEVELOPING FIGURE - LAMINATED WOOD BEAMS XY COORDINATES TO KEY POINTS

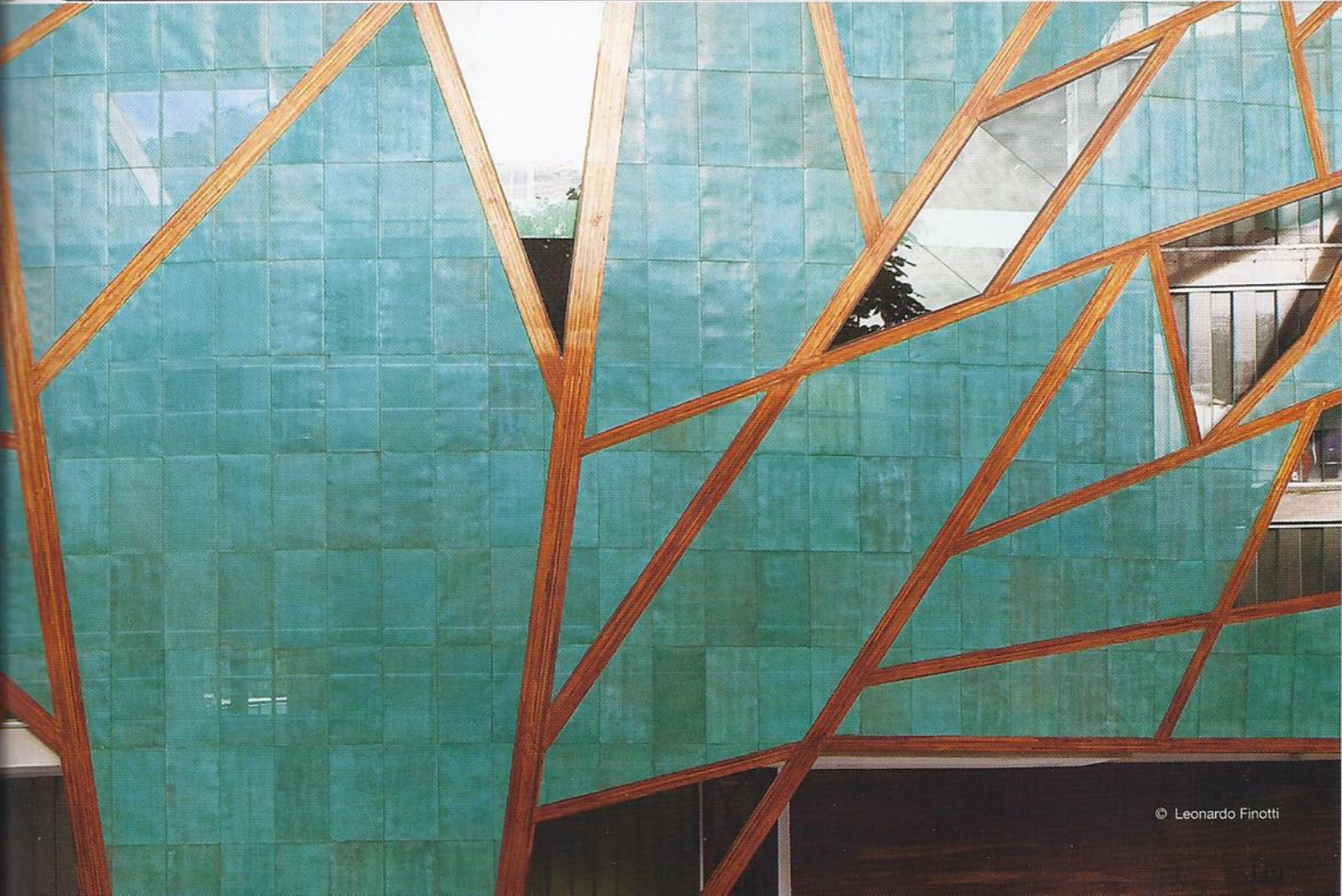


STREET FAÇADE DEVELOPING FIGURE - MICRO PERFORATED PRE-OXIDIZED COPPER PANELS TILING

立面图



© Leonardo Finotti



© Leonardo Finotti



© Leonardo Finotti



© Leonardo Finotti



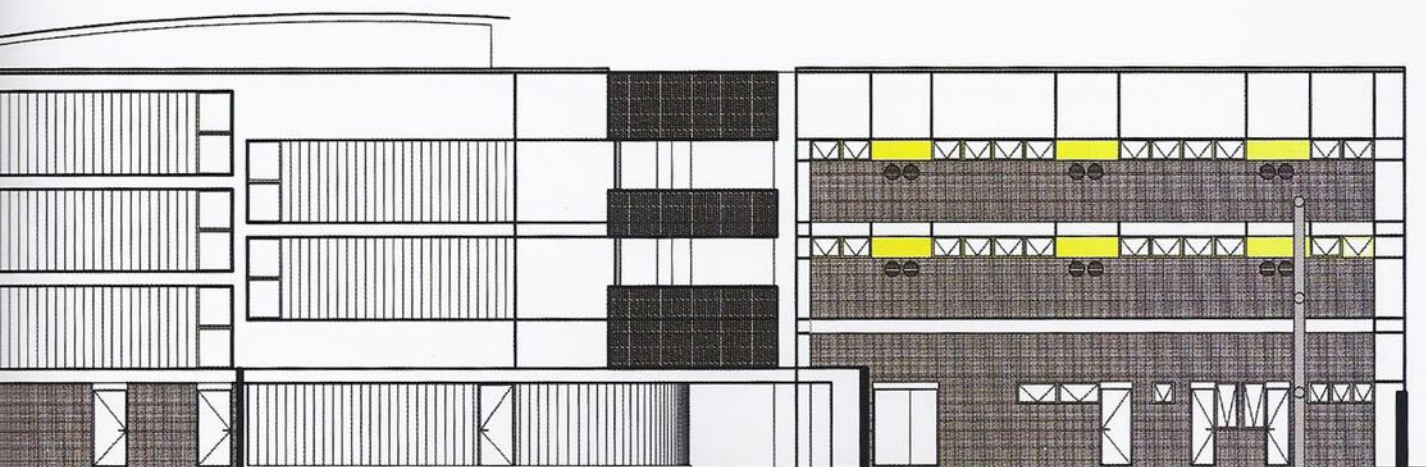
© Leonardo Finotti

莫匹小学, Mareines + Patalano, 巴西, 里约热内卢, 2009年

出于娱乐和教育的目的, 顶层被打造成一个种植草木的屋顶花园。在这里, 山峦的景色尽收眼底。大多数的教室由半透明的槽形玻璃所封闭。这样, 散入室内的光线不会分散学生的注意力。

MOPI Elementary School, Mareines + Patalano, Rio de Janeiro, Brazil, 2009

The top floor of the school is designed as a roof garden with grass and small trees overlooking the mountains with recreational and pedagogical purposes. Translucent channel glass encloses most of the classrooms, flooding it with light without distracting the students.



西南立面图 SOUTHWEST ELEVATION